

# Resveratrol enhances the sensitivity of cholangiocarcinoma to chemotherapeutic agents

Gabriel A Frampton<sup>1,2</sup>, Eric A Lazcano<sup>3</sup>, Huang Li<sup>1,2,4</sup>, Akimuddin Mohamad<sup>1,2</sup> and Sharon DeMorrow<sup>1,2</sup>

Cholangiocarcinomas are devastating cancers that are resistant to chemotherapies. Resveratrol, a food-derived polyphenol with antitumorigenic properties, can regulate the expression of cytochrome p450 1b1 (Cyp1b1), which may confer chemoresistance in various cancers. Our aims were to assess the effects of resveratrol on the sensitivity of cholangiocarcinoma cells to chemotherapeutic agents and show an association between Cyp1b1 expression and chemosensitivity. Cholangiocarcinoma cell lines were treated with resveratrol before the addition of 5-fluorouracil (5-FU), gemcitabine, or mitomycin C. Cell proliferation and apoptosis were assessed by MTS assays and Annexin staining. Resveratrol effects on cholangiocarcinoma tumor sensitivity to 5-FU was assessed in an *in vivo* xenograft model using Mz-ChA-1 cells. After resveratrol treatment, Cyp1b1 expression was assessed by real-time PCR and immunoblotting. Stable-transfected cell lines with Cyp1b1 expression knocked down (Mz-Cyp1b1) were used to assess sensitivity to chemotherapeutic agents by MTS assays and Annexin staining and in a xenograft model using Mz-ChA-1 and Mz-Cyp1b1 cells, respectively. For each chemotherapeutic agent, co-treatment with resveratrol *in vitro* decreased cell proliferation and increased apoptosis to a greater extent than with the chemotherapeutic agent alone. *In vivo*, 5-FU + resveratrol decreased tumor size and increased TUNEL staining to a greater extent than 5-FU alone. In parallel, resveratrol decreased Cyp1b1 expression in Mz-ChA-1 cells and in cholangiocarcinoma tumors. Mz-Cyp1b1 cells were more sensitive to chemotherapeutic agents *in vitro* than mock-transfected cells, and Mz-Cyp1b1-induced tumors were more susceptible to 5-FU treatment. We suggest that resveratrol treatment may be a useful adjunct therapy to improve chemosensitivity in cholangiocarcinoma.

*Laboratory Investigation* (2010) 90, 1325–1338; doi:10.1038/labinvest.2010.99; published online 10 May 2010

**KEYWORDS:** adjunct therapy; biliary cancer; cytochrome p450 1b1; polyphenols

Cholangiocarcinoma originates from the neoplastic transformation of epithelial cells that line the intra- and extra-hepatic bile ducts.<sup>1–4</sup> Symptoms are usually only evident after blockage of the bile duct, and at this late stage, chemotherapy and radiotherapy are relatively ineffectual leaving surgical resection as the only option for treatment.<sup>1–4</sup> Owing to this, these biliary cancers have a poor prognosis and improved treatments for this tumor are urgently needed.

Alternative adjunct therapies for these chemoresistant cancers are currently being explored. A large body of research has focused on plant-derived polyphenols, such as resveratrol,<sup>5–7</sup> caffeic acid,<sup>8</sup> tannic acid,<sup>9</sup> and green-tea polyphenols<sup>10</sup> as therapeutic and chemopreventive agents.

Research indicates that these polyphenols may have antioxidant characteristics with potential health benefits including reducing the risk of cancer.<sup>11</sup> We have shown that caffeic acid, a polyphenol extracted from the propolis of honeybee hives, exerts antiproliferative effects on cholangiocarcinoma<sup>8</sup> and other tumor types<sup>12–14</sup> *in vitro* and *in vivo* by inhibiting the nuclear factor- $\kappa$ -B pathway.<sup>8</sup> Furthermore, high concentrations of resveratrol have been shown to be antiproliferative in a cholangiocarcinoma cell line<sup>5</sup> as well as in other tumor types<sup>15–19</sup> through a number of different mechanisms including increased cyclooxygenase 2 expression,<sup>15</sup> activation of Forkhead proteins,<sup>16</sup> facilitation of death receptor complex formation,<sup>17,18</sup> or cell cycle arrest.<sup>19</sup>

<sup>1</sup>Department of Internal Medicine, Texas A&M Health Science Center College of Medicine, Temple, TX, USA; <sup>2</sup>Digestive Disease Research Center, Department of Internal Medicine, Scott & White Hospital, Temple, TX, USA; <sup>3</sup>Department of Research and Education, Scott & White Hospital, Temple, TX, USA and <sup>4</sup>Department of Hepatobiliary Surgery, First Affiliated Hospital, Sun Yat-sen University, Guangzhou, China  
Correspondence: Dr S DeMorrow, PhD, Department of Internal Medicine, Scott and White Hospital and Texas A&M Health Science Center, Medical Research Building 702 SW H.K. Dodgen Loop, Temple, TX 76504, USA.  
E-mail: demorrow@medicine.tamhsc.edu

Received 9 February 2010; accepted 8 April 2010

Although it is interesting that these food-derived polyphenols exert antiproliferative effects on tumor growth in their own right, often the concentrations required are prohibitive for these compounds to be considered as viable treatment options. A more rational approach is to study the efficacy of these compounds as adjunct therapies to existing chemotherapeutic strategies. For example, tannic acid and the green-tea polyphenol, epigallocatechin gallate have been shown to sensitize cholangiocarcinoma to chemotherapy-induced apoptosis *in vitro*.<sup>9,10</sup> Furthermore, the green-tea polyphenol administered together with gemcitabine not only slowed cholangiocarcinoma tumor progression in a xenograft mouse model, but it also resulted in a decrease in the tumor volume.<sup>10</sup> However, similar effects of resveratrol on the chemotherapy sensitivity of cholangiocarcinoma have not been addressed.

Resveratrol is a polyphenol found naturally in red wine, grapes, and peanuts. The compound has been reported to be a preventative agent against carcinogenesis, having the ability to suppress cancer initiation and promotion, as well as disrupt phases of tumor initiation, promotion, and progression.<sup>20</sup> It has additionally been shown to prevent chemical carcinogen-induced epithelial cell transformation.<sup>21,22</sup> In cholangiocarcinoma cell lines, resveratrol has been shown to perturb cell cycle progression, resulting in an accumulation of cells in the G<sub>1</sub>/S phase;<sup>5</sup> however, the precise mechanism by which this occurs is largely unknown.

Resveratrol treatment has earlier been shown to down-regulate the expression and activity of cytochrome p450 1b1 (Cyp1b1) in various cell lines.<sup>23–25</sup> Cyp1b1 has many functions, including the hydroxylation of 17-estradiol,<sup>26</sup> the biotransformation of testosterone<sup>27</sup> as well as the metabolism of xenobiotics such as ethoxyresorufin, theophylline, and caffeine.<sup>28</sup> It has been shown to be upregulated in a large number of cancers such as ovarian cancer,<sup>29</sup> endometrial cancer,<sup>30</sup> and non-small cell lung cancer.<sup>31</sup> The significance of Cyp1b1 overexpression in cancer is not fully understood, but the fact that it can inactivate flutamide, an antiandrogen used in the treatment of prostate cancer, with high efficiency suggests that this enzyme might have an important function in the development of resistance to some forms of chemotherapy.<sup>32</sup> In addition, increased Cyp1b1 expression has been shown to confer resistance to docetaxel,<sup>33</sup> although no metabolites of this drug could be observed after exposure to recombinant Cyp1b1,<sup>34</sup> suggesting that the precise mechanism for the enhanced chemoresistance associated with Cyp1b1 overexpression is largely unknown.

In this study, we show that low concentrations of resveratrol that have little or no toxicity in cholangiocarcinoma cells renders these cells more sensitive to a number of chemotherapeutic agents both *in vitro* and *in vivo*. Furthermore, we show that this sensitization is associated with a decrease in the expression of Cyp1b1 and that in parallel, the specific knockdown of Cyp1b1 in these cells also renders them more susceptible to chemotherapy-induced cell death.

## MATERIALS AND METHODS

### Cell Lines

We used four human cholangiocarcinoma cell lines (Mz-ChA-1, HuCC-T1, CCLP1, and SG231) with different origins. Mz-ChA-1 cells, from human gallbladder,<sup>35</sup> were a gift from Dr G. Fitz (University of Texas Southwestern Medical Center, Dallas, TX, USA). CCLP-1,<sup>36</sup> HuCC-T1,<sup>37</sup> and SG231,<sup>38</sup> all from intrahepatic bile ducts, were a kind gift from Dr AJ Demetris (University of Pittsburg, PA, USA) and were cultured as described.<sup>36–38</sup> The human immortalized, non-malignant cholangiocyte cell line, H69 (from Dr GJ Gores, Mayo Clinic, Rochester, MN, USA), was cultured as described.<sup>39</sup> In addition, the primary human intrahepatic cholangiocyte cell line was purchased from ScienCell (Carlsbad, CA, USA) and cultured according to the manufacturer's instructions.

### MTS Cell Proliferation Assays

MTS assays were performed as described earlier<sup>40</sup> and were stimulated with various concentrations of resveratrol (5–50  $\mu$ M; Sigma, St Louis, MO, USA) immediately before the addition of either 5-fluorouracil (1–100  $\mu$ M; 5-fluorouracil (5-FU); EMD Biosciences, Gibbstown, NJ, USA), gemcitabine (1–100  $\mu$ M; R&S Pharmchem, Hangzhou City, China), or mitomycin C (1–50  $\mu$ M; EMD Biosciences). In all cases, data were expressed as the fold change of treated cells as compared with vehicle-treated controls. To determine the approximate IC<sub>50</sub> doses, dose response data for each chemotherapeutic agent (+/- 20  $\mu$ M resveratrol) was plotted on a linear graph and the average dose required to reach 50% cell viability was extrapolated.

### Annexin V Staining

Apoptosis was detected by Annexin V staining after the protocol described earlier.<sup>40</sup> Briefly, cells were treated with resveratrol (20  $\mu$ M), with or without either 5-FU (30  $\mu$ M), mitomycin C (5  $\mu$ M), or gemcitabine (30  $\mu$ M) for 24 h. Annexin V binding was visualized as described earlier<sup>40</sup> and the percentage of Annexin V-positive cells were counted in five non-overlapping fields per coverslip. Data was expressed as average  $\pm$  s.e.m. and significance was assessed using a *t*-test.

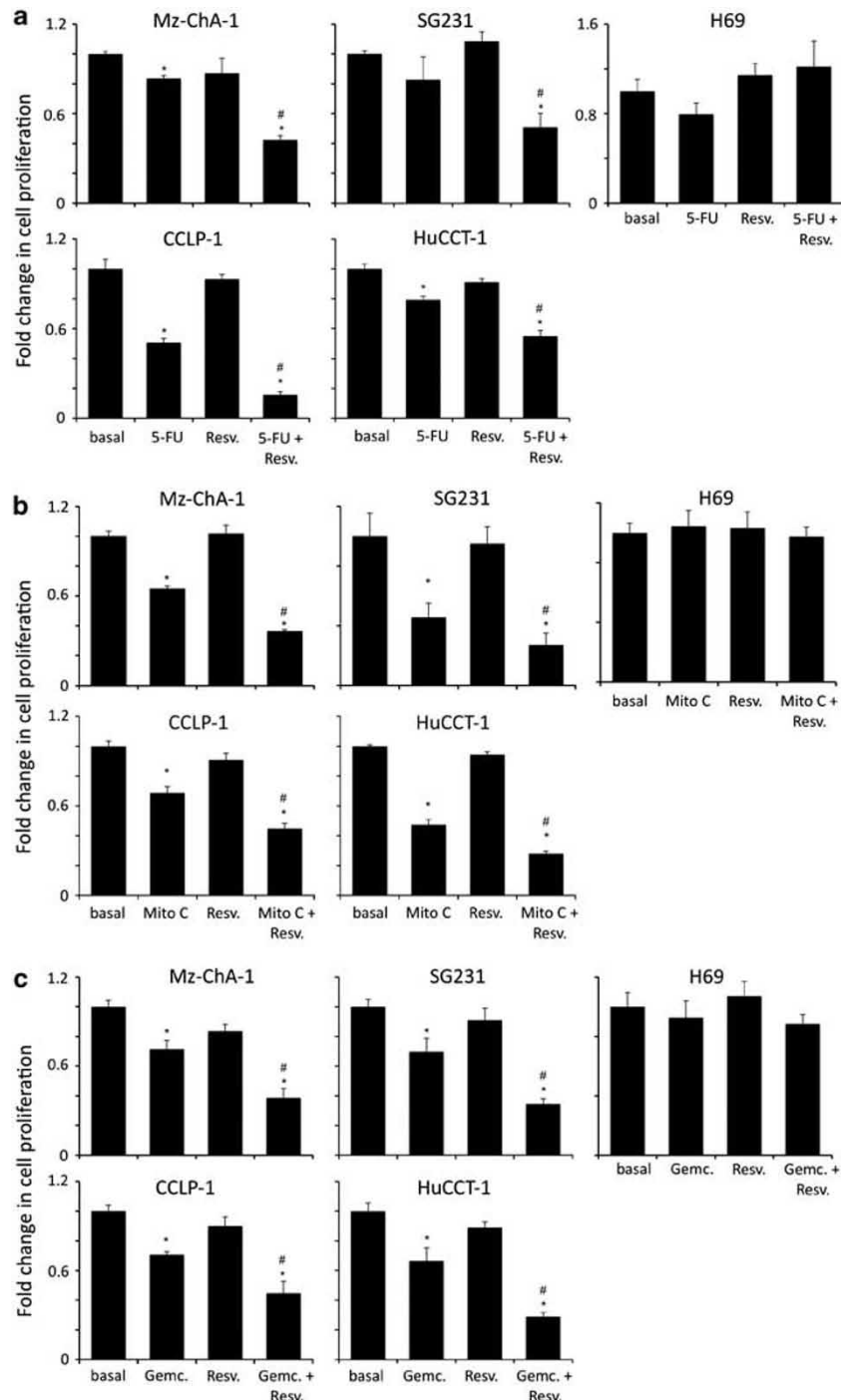
### Real-Time PCR

RNA was extracted from cells after treatment with various concentrations of resveratrol (5–50  $\mu$ M) for 24 h, using the RNeasy Mini kit (Qiagen, Valencia, CA, USA) according to the instructions provided by the vendor and reverse transcribed using the Reaction Ready™ First Strand cDNA synthesis kit (SA Bioscience, Frederick, MD, USA). These reactions were used as templates for the PCR assays using a SYBR Green PCR master mix (SA Bioscience) in the real-time thermal cycler (MX-3005P, Agilent Technologies, Santa Clara, CA, USA) using commercially available primers designed against human Cyp1b1 and GAPDH (SA Bioscience). A  $\Delta\Delta$ CT analysis was performed using the untreated cells as the control sample.<sup>41,42</sup> Data are expressed as relative mRNA levels  $\pm$  s.e.m. (*n* = 3).

### Immunoblotting

Immunoblots to detect Cyp1b1 and  $\beta$ -actin were performed as described earlier<sup>40</sup> using specific antibodies against each

protein (Santa Cruz Biotechnology, Santa Cruz, CA, USA). Data are expressed as fold change (mean  $\pm$  s.e.m.) of the relative expression after normalization with  $\beta$ -actin.



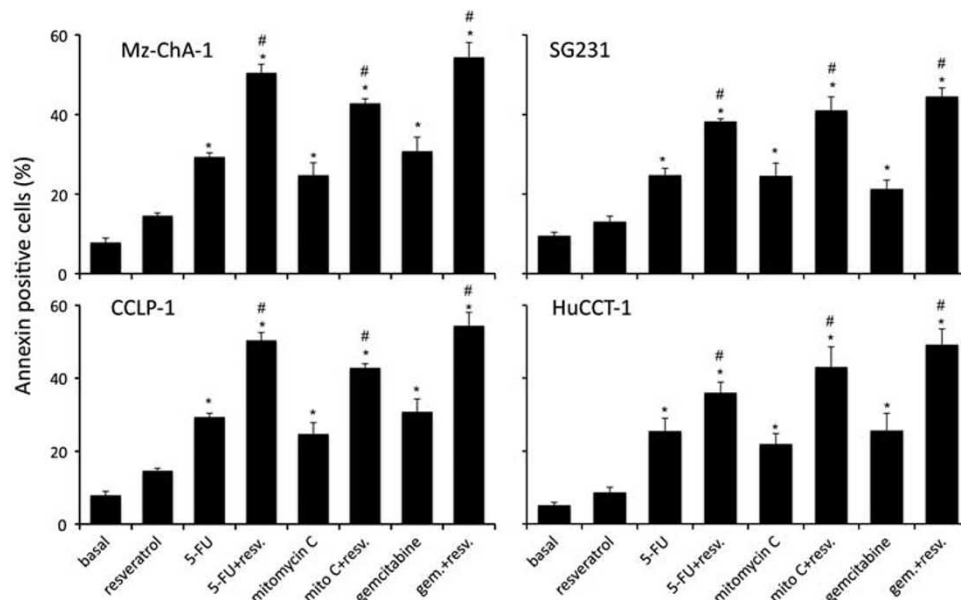
**Figure 1** Resveratrol renders cholangiocarcinoma cells, but not non-malignant cholangiocytes, more susceptible to chemotherapeutic agents *in vitro*. Cholangiocarcinoma cells (Mz-ChA-1, SG231, CCLP-1, and HuCCT-1) and non-malignant human cholangiocytes (H69) were treated with resveratrol (Resv; 20  $\mu$ M) before the addition of 5-FU (30  $\mu$ M; **a**), mitomycin C (Mito C; 5  $\mu$ M; **b**), or gemcitabine (Gemc; 30  $\mu$ M; **c**) for 48 h. Cell proliferation was assessed using an MTS cell proliferation assay. Data are expressed as fold change in proliferation (average  $\pm$  s.e.m.,  $n = 7$ ). The \* denotes significance ( $P < 0.05$ ) compared with basal, and the # denotes significance ( $P < 0.05$ ) compared with the chemotherapy treatment alone.

**Establishment of Stable-Transfected Cell Lines**

The function of Cyp1b1 expression in the relative chemoresistance of cholangiocarcinoma cells was shown using cells that have the expression of this gene stably knocked down. These cell lines were established using SureSilencing shRNA (SA-Biosciences, Frederick, MD) plasmids for human Cyp1b1, containing a marker for neomycin resistance for the selection of stably transfected cells after the methodology described earlier.<sup>42</sup> A number of subsequent clones were then assessed for the relative knockdown of Cyp1b1 using real-time PCR and a single clone with the greatest degree of knockdown was selected for subsequent experiments and were subsequently designated Mz-cyp1b1 shRNA and Mz-neo neg (mock-transfected control).

**Nude Mice Treatment**

*In vivo* experiments were performed as described earlier<sup>43</sup> in accordance with the guidelines of the Scott & White IACUC committee. Mz-ChA-1 cells ( $5 \times 10^6$ ) were suspended in 0.25 ml of extracellular matrix gel and injected subcutaneously in the flanks of these animals. After the establishment of the tumors, mice received resveratrol (20 mg/kg i.p.) with or without 5-FU (10 mg/kg i.p.) injected three times per week. In parallel, mice were injected with Mz-neo neg cells ( $5 \times 10^6$  cells) or Mz-cyp1b1 shRNA cells and treated with 5-FU (10 mg/kg i.p.) three times per week. After 38 days, mice were anesthetized with sodium pentobarbital (50 mg/kg i.p.) and killed according to



**Figure 2** Co-treatment of cholangiocarcinoma cells with resveratrol and chemotherapeutic agents increases the incidence of cell death *in vitro*. Cholangiocarcinoma cells (Mz-ChA-1, SG231, CCLP-1, and HuCCT-1) were treated with resveratrol (Resv; 20 μM) before the addition of 5-FU (30 μM), mitomycin C (Mito C; 5 μM), or gemcitabine (Gemc; 30 μM) for 24 h. Apoptosis was assessed by Annexin V staining. Data are expressed as a percentage of Annexin V-positive cells per field (average ± s.e.m., of 10 non-overlapping fields). The \* denotes significance ( $P < 0.05$ ) compared with basal, and the # denotes significance ( $P < 0.05$ ) compared with the chemotherapy treatment alone.

**Table 1** Efficacy of chemotherapeutic agents

Chemotherapy	Mz-ChA-1		SG231		HuCCT-1		CCLP-1		H69	
	- Resv.	+ Resv.	- Resv.	+ Resv.	- Resv.	+ Resv.	- Resv.	+ Resv.	- Resv.	+ Resv.
5-FU (μM)	95.01	58.99	61.12	50.72	63.09	43.49	87.48	53.07	206.3	286.3
Mitomycin (μM)	9.56	4.39	5.40	1.27	6.12	5.15	7.39	5.95	38.93	21.52
Gemcitabine (μM)	101.1	88.18	100.2	60.82	61.0	34.54	95.49	82.45	237.7	200.5

Cell lines were treated with resveratrol (20 μM) before the addition of various concentrations of 5-FU (1–100 μM), mitomycin C (1–10 μM), or gemcitabine (1–100 μM). The IC<sub>50</sub> dose was calculated as the dose of the chemotherapeutic agent required to inhibit the proliferation to 50% of the untreated cells in an MTS cell proliferation assay.

institutional guidelines. Serum was collected and AST and ALT levels were measured using a Dimension® RxL Max Integrated Chemistry system (Dade Behring, Deerfield, IL, USA) by the Scott & White Hospital, Chemistry Department.

Tumor tissues were excised from the flank of these mice, fixed in formalin, and embedded in paraffin. The cholangiocyte marker cytokeratin-19 (CK-19) was evaluated by immunohistochemical staining.<sup>44</sup> Proliferating cell nuclear antigen (PCNA) immunoreactivity in tumor sections was also evaluated and in parallel, PCNA mRNA expression was evaluated in tumor tissue by real-time PCR.<sup>44</sup> Apoptosis was detected in these sections using the ApopTag® peroxidase *in situ* apoptosis detection kit following the manufacturer's instructions (Millipore; Temucula, CA, USA).

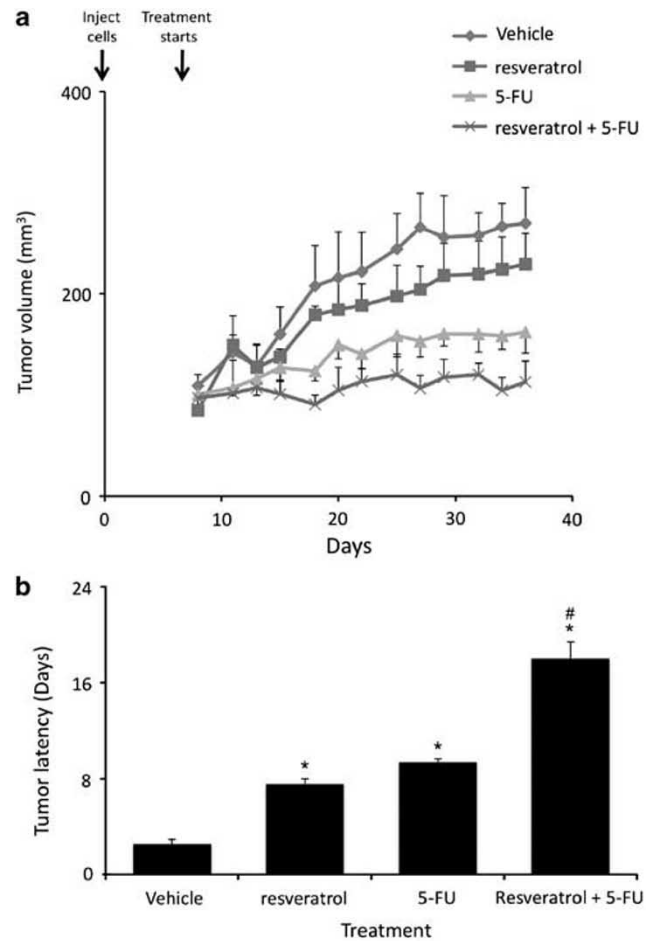
In each case, sections were counterstained with hematoxylin before analysis. Immunohistochemistry observation was taken by BX-40 light microscopy (Olympus, Tokyo, Japan) with a videocam (Model No U-PMTVC; Olympus) and processed with an Image Capturing Software (DP2-BSW; Olympus). Three pathologists independently performed analysis in a blind manner.

## RESULTS

### Resveratrol Renders Cholangiocarcinoma Cells More Susceptible to Chemotherapeutic Agents *In Vitro*

Resveratrol has earlier been shown to exert antiproliferative effects on cholangiocarcinoma cells *in vitro*<sup>5</sup> at high concentrations (32  $\mu$ M and above). Initially, we used a fixed concentration of the chemotherapeutic agents studied in four cholangiocarcinoma cell lines and showed that resveratrol concentrations up to 20  $\mu$ M have a synergistic effect on the antiproliferative actions of 5-FU (results from 20  $\mu$ M resveratrol are shown in Figure 1a), mitomycin C (results from 20  $\mu$ M resveratrol are shown in Figure 1b), and gemcitabine (results from 20  $\mu$ M resveratrol are shown in Figure 1c). Doses of resveratrol at 20  $\mu$ M or below had very little cytotoxic effects (Figure 1a, b, and c and data not shown) in these cell lines. Furthermore, analysis of apoptosis using Annexin V staining showed that resveratrol treatment (20  $\mu$ M) increased the susceptibility of the four cholangiocarcinoma cell lines studied to 5-FU-, mitomycin C-, and gemcitabine-induced apoptosis (Figure 2).

To determine the extent by which resveratrol increases the susceptibility of cholangiocarcinoma cells to the chemotherapeutic agents, we treated cholangiocarcinoma cell lines with 20  $\mu$ M resveratrol followed by various concentrations of 5-FU (1–100  $\mu$ M), mitomycin C (1–0  $\mu$ M), or gemcitabine (1–100  $\mu$ M). The relative IC<sub>50</sub> doses were calculated as described above for each cell line, and after every chemotherapeutic agent, co-treatment with resveratrol decreased the dose required to reduce cholangiocarcinoma cell number by 50% (Table 1).



**Figure 3** Resveratrol renders xenografted cholangiocarcinoma tumors more susceptible to 5-FU *in vivo*. Mz-ChA-1 cells were injected into the flank of athymic mice. After tumors were established, mice were treated with 20 mg/kg/day (i.p.) of resveratrol, 10 mg/kg/day of 5-FU or resveratrol and 5-FU in combination, 3 days per week for 38 days and tumor volume assessed (a). Tumor latency was assessed as the time taken for the tumor to grow to 150% of the original size (b). Data are expressed as average latency (days  $\pm$  s.e.m.) and the \* denotes significance ( $P < 0.05$ ) from vehicle-treated tumors and the # denotes significance ( $P < 0.05$ ) from 5-FU-treated tumors.

**Table 2** The effect of chronic resveratrol treatment +/- 5-FU *in vivo* on serum levels of liver enzymes

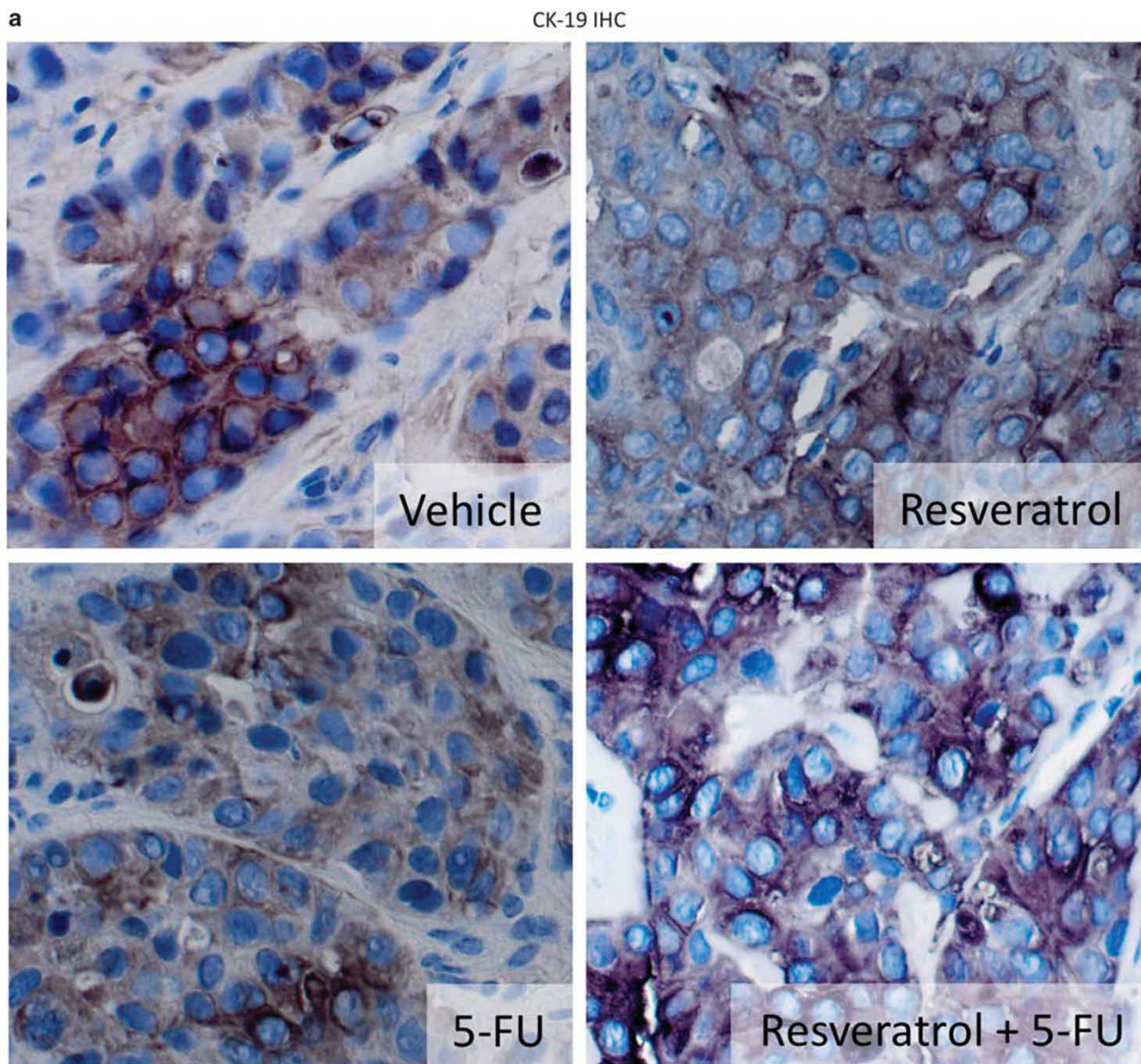
	Vehicle	Resveratrol	5-FU	Resveratrol + 5-FU
Serum AST (NR 59–247 U/L)	61.25 $\pm$ 5.62	77.5 $\pm$ 17.34	67.67 $\pm$ 10.47	87.5 $\pm$ 18.37
Serum ALT (NR 28–132 U/L)	39.5 $\pm$ 2.60	41.25 $\pm$ 7.85	30 $\pm$ 5.03	45.5 $\pm$ 16.73

Data is average  $\pm$  s.e.m.  $n = 4$ .  
NR, normal range.

### Resveratrol Treatment Renders Cholangiocarcinoma Tumors More Susceptible to 5-FU *In Vivo*

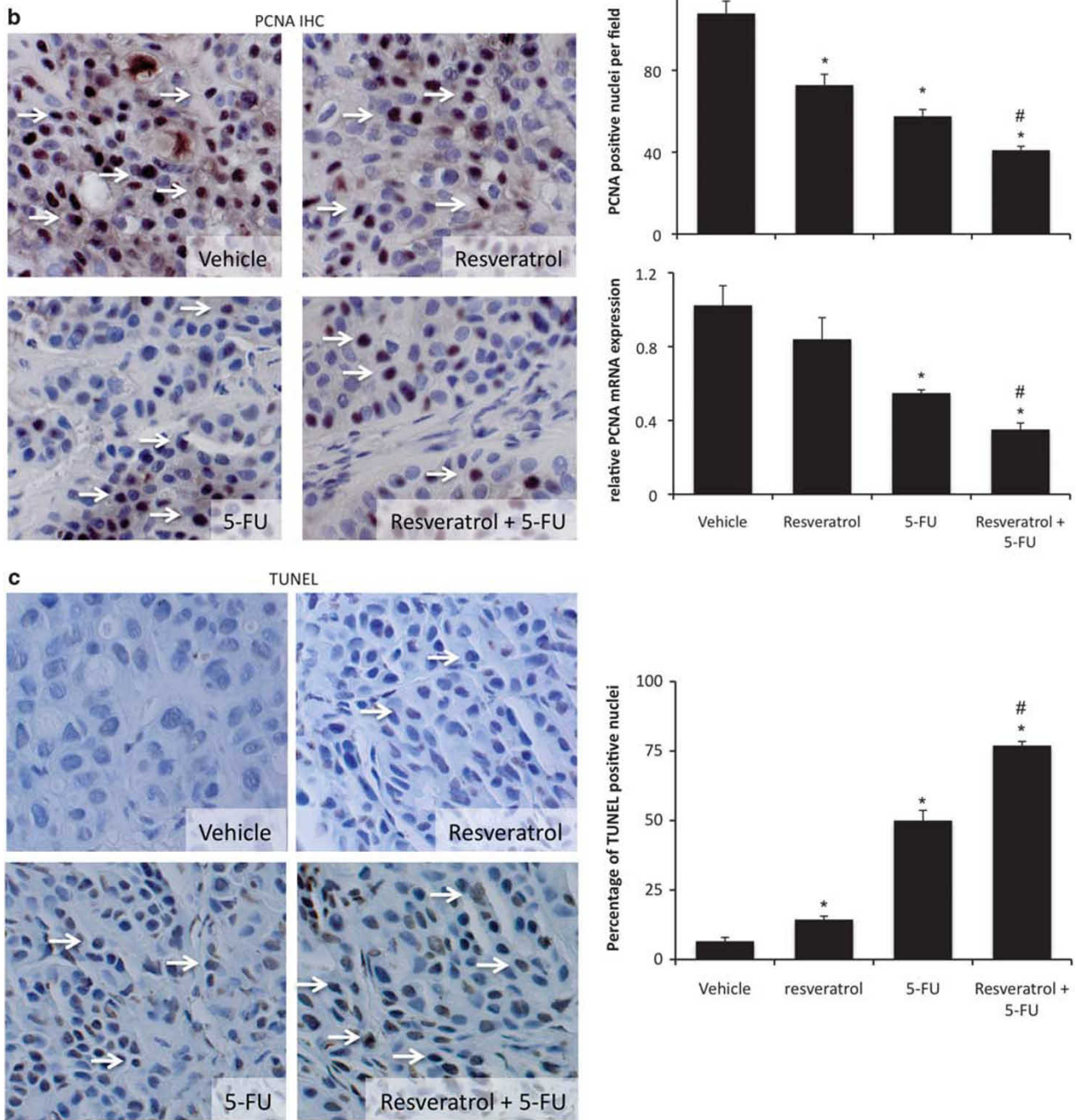
Treatment of an *in vivo* xenograft model of cholangiocarcinoma with 5-FU (10 mg/kg/day) significantly reduced tumor growth (Figure 3a) and increased tumor latency (Figure 3b) compared with vehicle-treated mice as expected. Chronic treatment of mice with 10 mg/kg resveratrol also decreased tumor growth (Figure 3a) and increased tumor

latency (Figure 3b) compared with vehicle, although not to the same degree as 5-FU. However, combination therapy of resveratrol (10 mg/kg) and 5-FU (10 mg/kg/day) decreased tumor growth (Figure 3a) and increased tumor latency (Figure 3b) to a greater degree than 5-FU alone, providing further evidence to suggest that using resveratrol as an adjunct therapy may decrease the chemoresistance of these tumors.



**Figure 4** Immunohistological analysis of tumors. Immunohistochemistry on tumors from vehicle-, resveratrol, 5-FU, and resveratrol + 5-FU-treated mice were performed using specific antibodies against CK-19 (a), PCNA (b), and TUNEL (c). Representative photomicrographs of the immunoreactivity are shown (magnification  $\times 40$ ) and positive staining is indicated by arrows. Semi-quantitative analysis of PCNA immunoreactivity was performed and data was expressed as average ( $\pm$  s.e.m.) PCNA-positive nuclei per field (b) and the asterisk denotes significance ( $P < 0.05$ ) compared with vehicle-treated tumors and the # denotes significance ( $P < 0.05$ ) from 5-FU-treated tumors. PCNA expression in the tumors was also assessed by real-time PCR (b). Data are expressed as average  $\pm$  s.e.m. ( $n = 3$ ). Asterisk denotes significance ( $P < 0.05$ ) compared with vehicle-treated tumors. Semi-quantitative analysis of TUNEL-positive nuclei was assessed and expressed as average ( $\pm$  s.e.m.) PCNA-positive nuclei per field (c) and the asterisk denotes significance ( $P < 0.05$ ) compared with vehicle-treated tumors and the # denotes significance ( $P < 0.05$ ) from 5-FU-treated tumors.



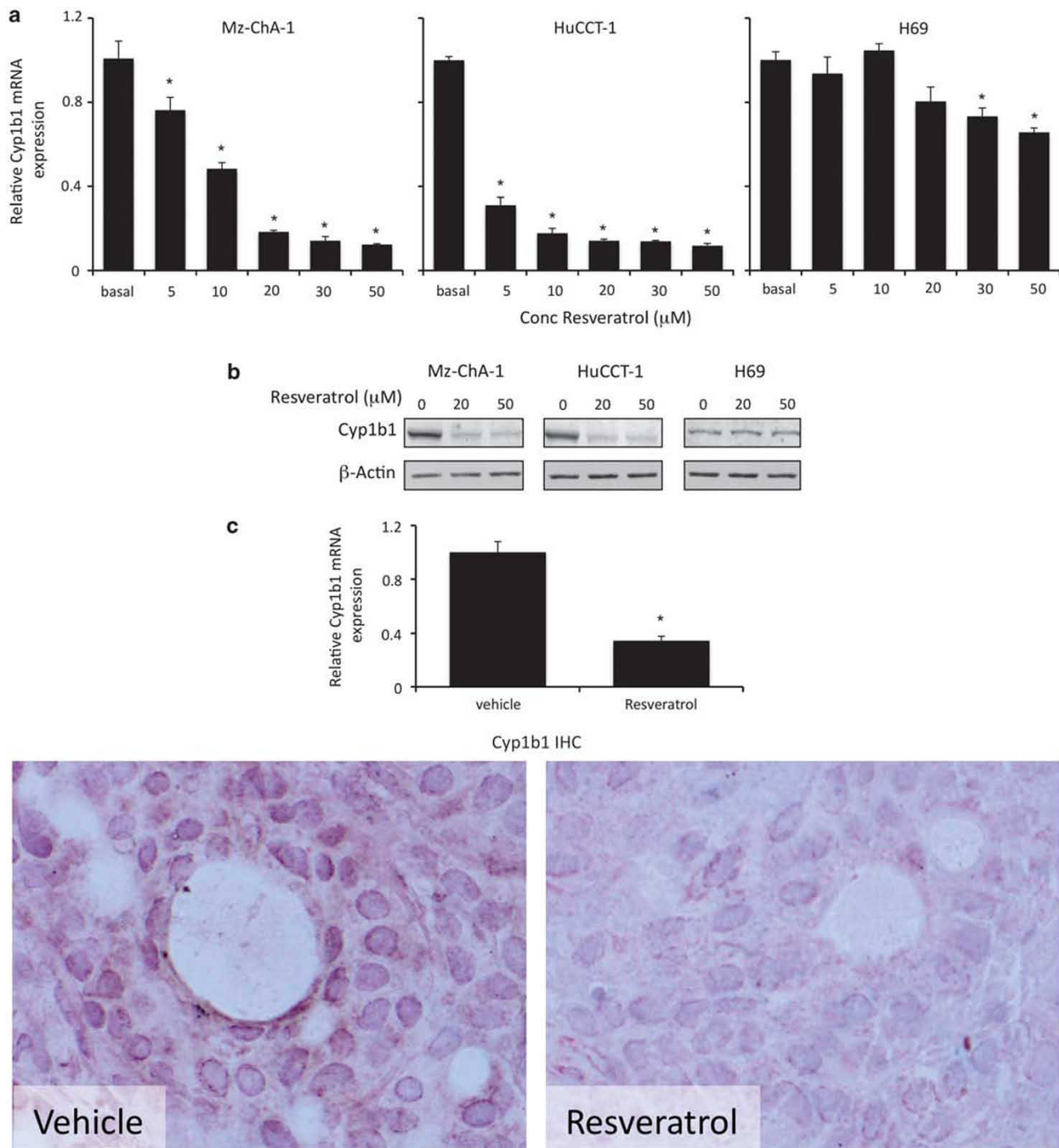


**Figure 4** Continued.

Analysis of liver enzymes in the serum revealed that there was no significant difference in AST and ALT levels between any of the treatment groups (Table 2), all of which fell within normal range, suggesting that these treatments were well tolerated and did not cause any liver damage.

Histological analysis of the excised tumors revealed that most of the cells from tumors of all treatment groups were CK-19 positive, indicating a cholangiocyte phenotype (Figure 4a). Using PCNA immunoreactivity as a marker of

proliferative capacity, resveratrol and 5-FU treatment decreased the number of PCNA-positive nuclei per field compared with vehicle treatment, whereas the combination of resveratrol and 5-FU decreased PCNA positive to an even greater extent than either treatment alone (Figure 4b). This pattern of PCNA expression was confirmed by real-time PCR analysis of RNA extracted from the excised tumors (Figure 4b). In parallel, using TUNEL staining as a marker of apoptosis, resveratrol treatment slightly increased the



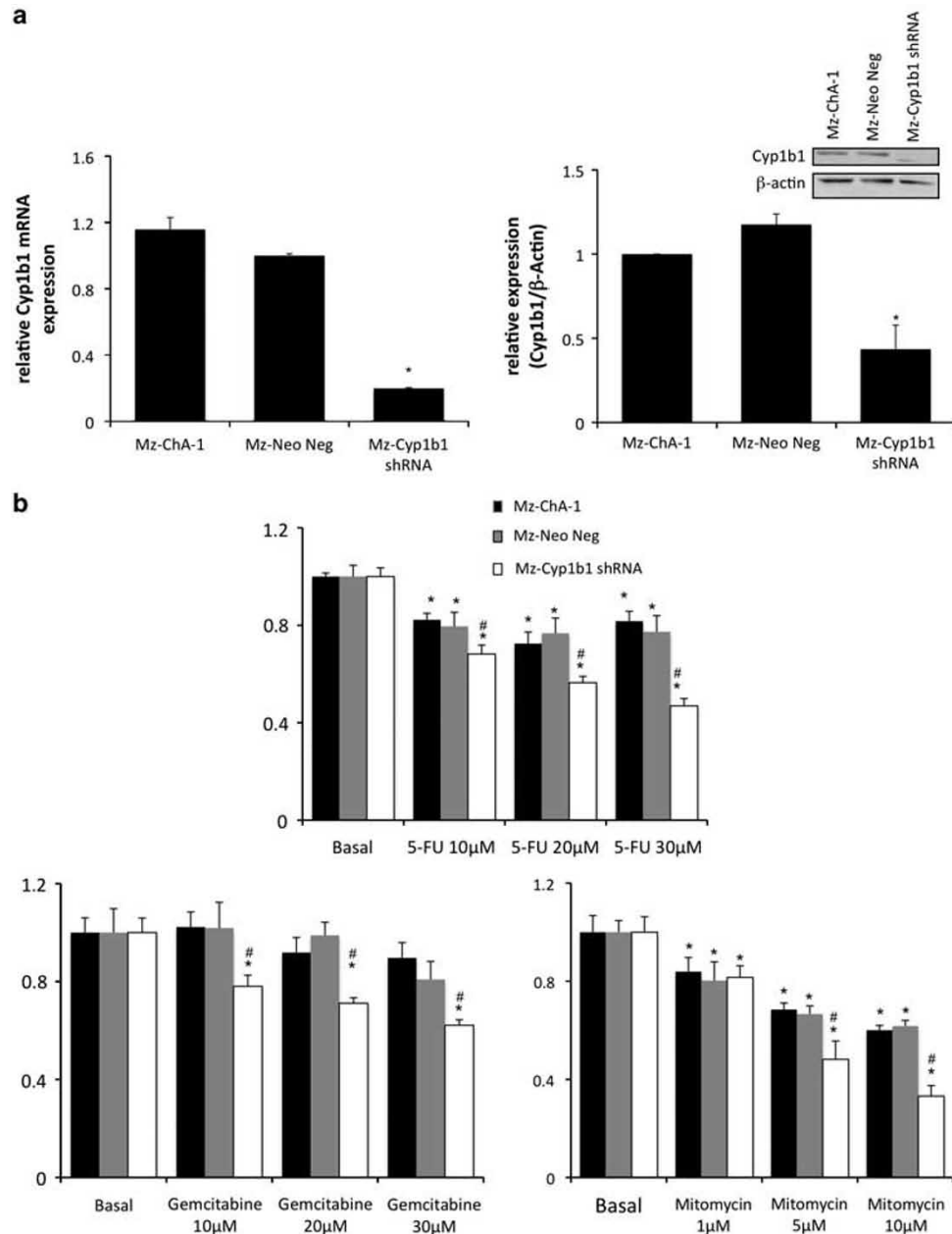
**Figure 5** Resveratrol treatment of cholangiocarcinoma cells suppressed the expression of Cyp1b1 *in vitro* and *in vivo*. Cholangiocarcinoma cells (Mz-ChA-1 and HuCCT-1) and non-malignant cholangiocytes (H69) were treated with various concentrations of resveratrol (5–50 μM) and Cyp1b1 mRNA expression was assessed by real-time PCR (a). Asterisk denotes significance ( $P < 0.05$ ) compared basal levels of Cyp1b1. Cyp1b1 protein expression was assessed by immunoblotting in cell lines after *in vitro* resveratrol treatment. Representative blots are shown (b). (c) The effects of resveratrol treatment on Cyp1b1 expression was assessed in chronically treated cholangiocarcinoma tumors by real-time PCR (top panel) and immunohistochemistry (bottom panel).

percentage of TUNEL-positive nuclei per field compared with vehicle treatment (Figure 4c). There was also a modest increase after 5-FU increased, but the co-treatment of resveratrol and 5-FU increased the incidence of apoptosis beyond either treatment alone (Figure 4c).

### Resveratrol Decreases the Expression of Cyp1b1

Resveratrol has earlier been shown to decrease the expression of Cyp1b1 and other enzymes responsible for the metabolism of xenobiotics.<sup>28</sup> Here, we wished to determine whether resveratrol also decreased the expression of Cyp1b1 in





**Figure 6** Specific knockdown of Cyp1b1 expression renders cholangiocarcinoma cells more susceptible to chemotherapeutic agents. Mz-ChA-1 cells were stably transfected with Cyp1b1 shRNA vectors. The expression of Cyp1b1 was assessed in the mock-transfected cell line (Mz-Neo Neg) and the cell line containing the Cyp1b1 shRNA (Mz-Cyp1b1 shRNA) real-time PCR and immunoblotting (a). Data are expressed as average  $\pm$  s.e.m. after correction for GAPDH expression or  $\beta$ -actin, respectively. \* denotes significance ( $P < 0.05$ ) from Mz-ChA-1 cells. The effect of chemotherapy treatment on cell proliferation was assessed by MTS assays (b). The three cell lines (Mz-ChA-1, Mz-Neo Neg, and Mz-Cyp1b1 shRNA) were treated with 5-FU (10–30  $\mu$ M), gemcitabine (10–30  $\mu$ M), or mitomycin C (1–10  $\mu$ M) for 48 h and data are expressed as fold change in proliferation (average  $\pm$  s.e.m.,  $n = 7$ ). \* denotes  $P < 0.05$  compared with basal treatment within each cell line and # denotes significance compared with the effects of these chemotherapeutic agents compared with Mz-ChA-1 cells.

cholangiocarcinoma cells. Treating two cell lines (Mz-ChA-1 and HuCCT-1) with various concentrations of resveratrol decreased cyp1b1 mRNA expression as shown by real-time PCR analysis (Figure 5a) and Cyp1b1 protein expression (Figure 5b) as shown by immunoblotting. In addition, chronic treatment of nude mice with resveratrol also decreased Cyp1b1 mRNA expression and immunoreactivity in cholangiocarcinoma tumors (Figure 5c).

### Suppression of Cyp1b1 Expression Renders Cholangiocarcinoma Cells and Tumors More Susceptible to Chemotherapeutic Agents *In Vitro* and *In Vivo*

We then wished to determine whether the dampened expression of Cyp1b1 in cholangiocarcinoma cells renders them more susceptible to chemotherapeutic agents. To do this, we established stable-transfected cell lines using Cyp1b1-specific shRNA constructs. Once established, the relative

**Table 3 Efficacy of chemotherapeutic agents in stable-transfected cell lines**

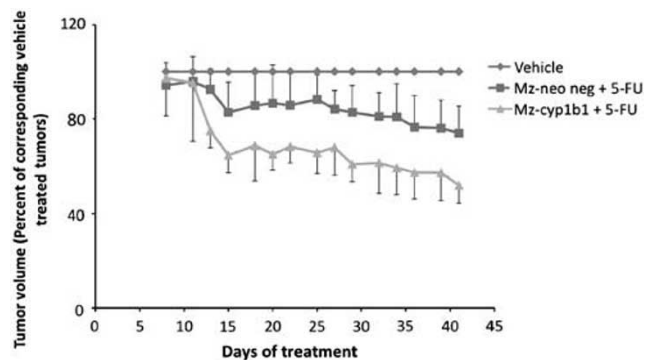
Chemotherapy	Mz-ChA-1	Mz-Neo Neg	Mz-Cyp1b1 shRNA
5-FU ( $\mu\text{M}$ )	95.01	87.67	25.51
Mitomycin C ( $\mu\text{M}$ )	9.56	8.58	4.71
Gemcitabine ( $\mu\text{M}$ )	101.1	95.78	37.93

Cell lines were treated with various concentrations of 5-FU (1–100  $\mu\text{M}$ ), mitomycin C (1–50  $\mu\text{M}$ ), or gemcitabine (1–100  $\mu\text{M}$ ). The  $\text{IC}_{50}$  dose was calculated as the dose of the chemotherapeutic agent required to inhibit the proliferation to 50% of the untreated cells in an MTS cell proliferation assay.

Cyp1b1 expression was determined by real-time PCR and immunoblotting (Figure 6a). The mock-transfected cell line (Mz-Neo neg) expressed Cyp1b1 to a similar level as the parental cell line (Mz-ChA-1), in which the stably transfected Mz-Cyp1b1 shRNA cell line expressed approximately 20% or the parental and mock-transfected cell lines (Figure 6a). These cell lines were then treated with low doses of 5-FU (10–30  $\mu\text{M}$ ), gemcitabine (10–30  $\mu\text{M}$ ), or mitomycin C (1–10  $\mu\text{M}$ ) to determine the relative sensitivity of these cell lines to these agents. Mz-Cyp1b1 shRNA cells were dramatically more susceptible to all agents studied (Figure 6b). Indeed, dampened Cyp1b1 expression decreased the dose required to achieve 50% reduction in cell proliferation ( $\text{IC}_{50}$ ; Table 3).

We then established xenograft tumors of cholangiocarcinoma using the Mz-Cyp1b1 shRNA and Mz-Neo neg and determined the relative effects of 5-FU on these tumors. The Mz-Cyp1b1 shRNA cell line maintained the suppressed levels of Cyp1b1 expression throughout the *in vivo* experiments (data not shown). As the Mz-Cyp1b1 cell line and the mock-transfected control cell line had slightly different tumorigenicity and growth rates (data not shown), we expressed the tumor volumes as a percentage of the corresponding vehicle-treated cell line at each time point measured, and clearly showed that the tumors derived from cells with suppressed Cyp1b1 expression are more susceptible to 5-FU treatment (Figure 7).

Once again, histological analysis of the resulting tumors revealed that most of the cells have a cholangiocyte phenotype (as shown by CK-19 immunoreactivity; Figure 8a). The amount of PCNA-positive nuclei per field decreased after 5-FU treatment in tumors derived from both the Mz-Cyp1b1 shRNA cell line and the mock-transfected Mz-Neo neg cell line (Figure 8b); however, this decrease was more evident in the Mz-ChA-1 shRNA-derived tumors. This pattern of PCNA expression was also confirmed by real-time PCR in RNA extracted from the excised tumors (Figure 8b). Conversely, 5-FU treatment increased the incidence of apoptosis in tumors derived from both cell lines (Figure 8c); however, as expected, the effect was more dramatic in the tumors derived from the Mz-Cyp1b1 shRNA cell line (Figure 8c). Analysis of liver



**Figure 7** Genetic knockdown of Cyp1b1 expression renders the resulting cholangiocarcinoma tumors more susceptible to 5-FU treatment. Mz-Neo Neg cells or Mz-Cyp1b1 shRNA cells were injected into the flank of athymic mice. After tumors were established, mice were treated with 10 mg/kg/day of 5-FU 3 days per week for 40 days and tumor volume assessed. As these two cell lines had different tumorigenicity and growth rates, for clarity of presentation, tumor volumes are expressed as a percentage of the corresponding vehicle-treated tumor at each time point measured.

enzymes in the serum revealed that there was no significant difference in AST and ALT levels between any of the treatment groups (data not shown).

## DISCUSSION

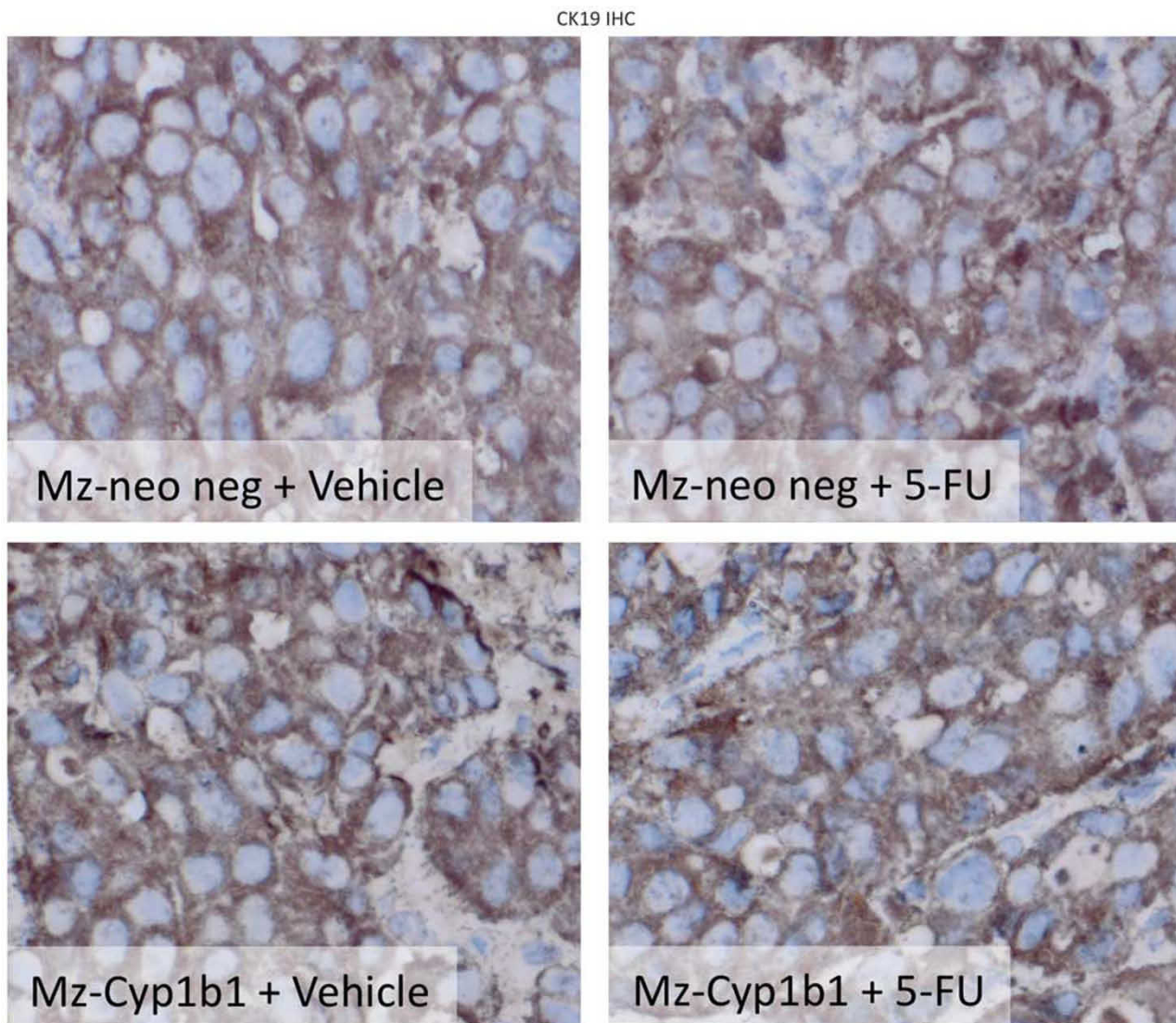
The major findings presented here relate to the efficacy of resveratrol as an adjunct therapy for the treatment of cholangiocarcinoma, a relatively chemoresistant cancer. Specifically, treatment of cholangiocarcinoma cells and tumors with low concentrations of resveratrol increased the sensitivity to various chemotherapeutic agents currently used for the treatment of cholangiocarcinoma. In parallel, resveratrol treatment decreased the expression of Cyp1b1, and genetic knockdown of Cyp1b1 rendered the cells and tumors more susceptible to the same chemotherapeutic agents as above, suggesting that the level of Cyp1b1 expression may correlate to the relative chemoresistance of these cells. Taken together, these data suggest that resveratrol may be useful as an adjunct therapy for the treatment of cholangiocarcinoma.

Resveratrol has long been suggested as an effective, naturally occurring chemopreventive agent.<sup>20</sup> It has been shown to regulate and suppress events associated with tumor initiation and promotion. Specifically, resveratrol can act as an antioxidant and an antimutagen, thereby suppressing the important features of tumor initiation.<sup>20</sup> Resveratrol also mediates anti-inflammatory events associated with tumor promotion by inhibiting prostaglandin release,<sup>45–47</sup> as well as cyclooxygenase and hydroperoxidase functions.<sup>20,48</sup> Indeed, dietary administration of resveratrol caused a decrease in 7,12-dimethylbenz[a]anthracene-induced rat mammary carcinogenesis and extended the latency period of tumor development.<sup>22</sup> Within the liver, resveratrol has been shown to exert antiproliferative and antimigratory effects on cholangiocarcinoma cells *in vitro*<sup>5</sup> and has been identified using a

bioinformatic screening approach, as an important therapeutic agent for the treatment of hepatocellular carcinoma because of its ability to reverse migratory and invasive phenotypes.<sup>7</sup> The data presented in this study also suggests a function for resveratrol in reducing the resistance of cholangiocarcinoma to chemotherapeutic agents *in vitro* and *in vivo*.

In support of our data, the resveratrol-induced decrease in resistance to chemotherapeutics has earlier been shown in human oral epidermoid carcinoma cells.<sup>49</sup> Specifically, resveratrol rendered these cells more susceptible to the

chemotherapeutics, vincristine, adriamycin, and paclitaxel through a mechanism that was associated with decreased expression of the multidrug-resistant gene MDR1.<sup>49</sup> Furthermore, resveratrol treatment increases the sensitivity of cancer stem-like cells to radiotherapy, although the precise mechanism for this is unknown.<sup>50</sup> Another mechanism by which resveratrol may increase sensitivity to chemotherapy-induced apoptosis lies in its ability to redistribute the death receptors (DR), Fas, DR4, and DR5 into lipid raft structures thereby facilitating the formation of the death receptor complex and rendering these cells more sensitive to death



**Figure 8** Immunohistological analysis of tumors. Immunohistochemistry on tumors derived from Mz-Neo neg cells and Mz-Cyp1b1 shRNA cells treated with vehicle of 5-FU were performed using specific antibodies against CK-19 (a), PCNA (b), and TUNEL (c). Representative photomicrographs of the immunoreactivity are shown (magnification  $\times 40$ ) and positive immunoreactivity indicated by arrows. Semi-quantitative analysis of PCNA immunoreactivity was performed and data was expressed as average ( $\pm$  s.e.m.) PCNA-positive nuclei per field and also by real-time PCR (b). Data are expressed as average  $\pm$  s.e.m. ( $n = 3$ ). Semi-quantitative analysis of TUNEL-positive nuclei was assessed and expressed as average ( $\pm$  s.e.m.) PCNA-positive nuclei per field (c). In each case, the asterisk denotes significance ( $P < 0.05$ ) compared with the corresponding vehicle-treated tumors and the # denotes significance ( $P < 0.05$ ) from 5-FU-treated tumors derived from the Mz-Neo neg cells.



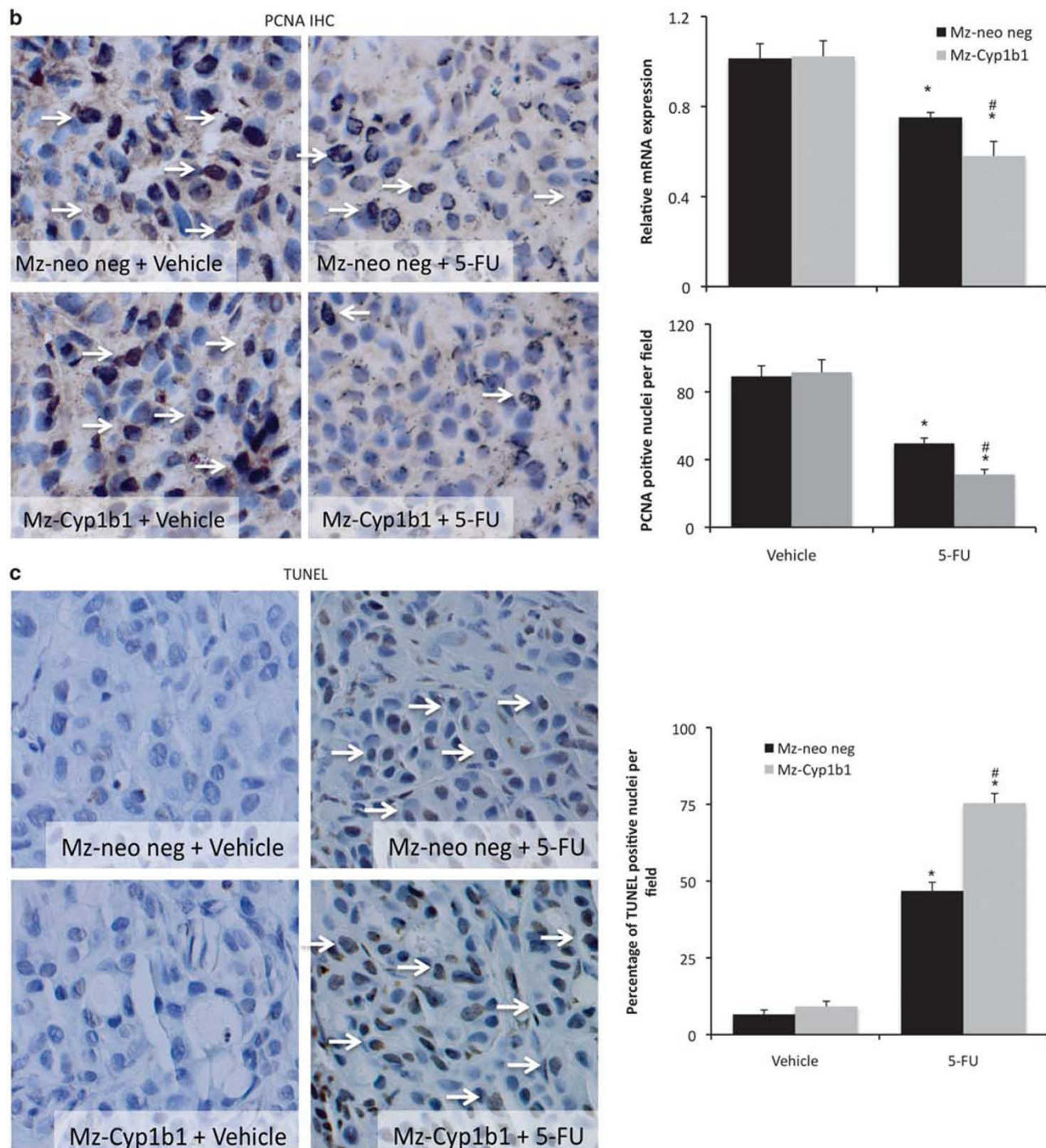


Figure 8 Continued.

receptor ligand-induced cell death.<sup>17,18</sup> It is this death receptor pathway that is impaired in a number of chemoresistant tumors such as cholangiocarcinoma<sup>51</sup> and pancreatic cancer<sup>52</sup> and treatments that may reverse this impairment may increase the sensitivity of these tumors to chemotherapeutic strategies. In contrast, our data suggests that resveratrol sensitizes cholangiocarcinoma cells to a number of chemotherapeutic agents through the decreased expression of

Cyp1b1. However, the possibility that resveratrol is also facilitating death receptor complex formation in these cells cannot be ruled out.

Cyp1b1 has earlier been shown to have a function in the bioactivation of several procarcinogens to carcinogenic derivatives<sup>53</sup> and also to detoxify several xenobiotic compounds,<sup>28</sup> including various chemotherapeutic agents.<sup>33</sup> It has also been shown to be overexpressed in a number of

tumors.<sup>29–31,54,55</sup> Owing to this, agents that suppress the expression of Cyp1b1 have been touted as useful chemopreventive agents. Evidence to suggest that resveratrol may also exert its chemopreventive actions through the inhibition of Cyp1b1 expression has earlier been shown.<sup>23–25</sup> The molecular mechanism by which resveratrol regulates the expression of Cyp1b1 is largely unknown and is the topic of ongoing research in our laboratory.

In conclusion, the data presented here clearly showed a function for low doses of resveratrol in the sensitivity of cholangiocarcinoma to chemotherapy-induced cell death. In addition, we show that suppression of Cyp1b1 expression may be one mechanism by which resveratrol renders these cells more susceptible to chemotherapy. Taken together with the current literature, we propose that the use of adjunct therapies aimed at overcoming the detoxification of chemotherapeutics and/or increasing the sensitivity to intrinsic death pathways may be explored for the treatment of chemoresistant tumors such as cholangiocarcinoma.

#### ACKNOWLEDGEMENTS

We sincerely thank Dr Gianfranco Alpini for his assistance and expert advice in the development of this manuscript. In addition, we thank Ms Monique Coufal and Mr Andrew Brennan for their technical assistance. This work was supported by an NIH K01 grant award (DK078532) to Dr DeMorrow, and a state scholarship of China Scholarship Council to Dr Huang.

#### DISCLOSURE/CONFLICT OF INTEREST

The authors declare no conflict of interest.

- Blechacz B, Gores GJ. Tumor-specific marker genes for intrahepatic cholangiocarcinoma: utility and mechanistic insight. *J Hepatol* 2008;49:160–162.
- Blechacz BR, Gores GJ. Cholangiocarcinoma. *Clin Liver Dis* 2008;12:131–150, ix.
- Gores GJ. Cholangiocarcinoma: current concepts and insights. *Hepatology* 2003;37:961–969.
- Sirica AE. Cholangiocarcinoma: molecular targeting strategies for chemoprevention and therapy. *Hepatology* 2005;41:5–15.
- Roncoroni L, Elli L, Dolfini E, *et al*. Resveratrol inhibits cell growth in a human cholangiocarcinoma cell line. *Liver Int* 2008;28:1426–1436.
- Mouria M, Gukovskaya AS, Jung Y, *et al*. Food-derived polyphenols inhibit pancreatic cancer growth through mitochondrial cytochrome C release and apoptosis. *Int J Cancer* 2002;98:761–769.
- Braconi C, Meng F, Swenson E, *et al*. Candidate therapeutic agents for hepatocellular cancer can be identified from phenotype-associated gene expression signatures. *Cancer* 2009;115:3738–3748.
- Onori P, DeMorrow S, Gaudio E, *et al*. Caffeic acid phenethyl ester decreases cholangiocarcinoma growth by inhibition of NF-kappaB and induction of apoptosis. *Int J Cancer* 2009;125:565–576.
- Naus PJ, Henson R, Bleeker G, *et al*. Tannic acid synergizes the cytotoxicity of chemotherapeutic drugs in human cholangiocarcinoma by modulating drug efflux pathways. *J Hepatol* 2007;46:222–229.
- Lang M, Henson R, Braconi C, *et al*. Epigallocatechin-gallate modulates chemotherapy-induced apoptosis in human cholangiocarcinoma cells. *Liver Int* 2009;29:670–677.
- Soory M. Relevance of nutritional antioxidants in metabolic syndrome, ageing and cancer: potential for therapeutic targeting. *Infect Disord Drug Targets* 2009;9:400–414.
- Chen MJ, Chang WH, Lin CC, *et al*. Caffeic acid phenethyl ester induces apoptosis of human pancreatic cancer cells involving caspase and mitochondrial dysfunction. *Pancreatol* 2008;8:566–576.
- Demestre M, Messerli SM, Celli N, *et al*. CAPE (caffeic acid phenethyl ester)-based propolis extract (Bio 30) suppresses the growth of human neurofibromatosis (NF) tumor xenografts in mice. *Phytother Res* 2009;23:226–230.
- Wu CS, Chen MF, Lee IL, *et al*. Predictive role of nuclear factor-kappaB activity in gastric cancer: a promising adjuvant approach with caffeic acid phenethyl ester. *J Clin Gastroenterol* 2007;41:894–900.
- Tang HY, Shih A, Cao HJ, *et al*. Resveratrol-induced cyclooxygenase-2 facilitates p53-dependent apoptosis in human breast cancer cells. *Mol Cancer Ther* 2006;5:2034–2042.
- Su JL, Yang CY, Zhao M, *et al*. Forkhead proteins are critical for bone morphogenetic protein-2 regulation and anti-tumor activity of resveratrol. *J Biol Chem* 2007;282:19385–19398.
- Delmas D, Rebe C, Lacour S, *et al*. Resveratrol-induced apoptosis is associated with Fas redistribution in the rafts and the formation of a death-inducing signaling complex in colon cancer cells. *J Biol Chem* 2003;278:41482–41490.
- Delmas D, Rebe C, Micheau O, *et al*. Redistribution of CD95, DR4 and DR5 in rafts accounts for the synergistic toxicity of resveratrol and death receptor ligands in colon carcinoma cells. *Oncogene* 2004;23:8979–8986.
- Benitez DA, Pozo-Guisado E, Alvarez-Barrientos A, *et al*. Mechanisms involved in resveratrol-induced apoptosis and cell cycle arrest in prostate cancer-derived cell lines. *J Androl* 2007;28:282–293.
- Jang M, Cai L, Udeani GO, *et al*. Cancer chemopreventive activity of resveratrol, a natural product derived from grapes. *Science* 1997;275:218–220.
- Li ZG, Hong T, Shimada Y, *et al*. Suppression of N-nitrosomethylbenzylamine (NMBA)-induced esophageal tumorigenesis in F344 rats by resveratrol. *Carcinogenesis* 2002;23:1531–1536.
- Banerjee S, Bueso-Ramos C, Aggarwal BB. Suppression of 7,12-dimethylbenz(a)anthracene-induced mammary carcinogenesis in rats by resveratrol: role of nuclear factor-kappaB, cyclooxygenase 2, and matrix metalloproteinase 9. *Cancer Res* 2002;62:4945–4954.
- Liu J, Wang Q, Wu DC, *et al*. Differential regulation of CYP1A1 and CYP1B1 expression in resveratrol-treated human medulloblastoma cells. *Neurosci Lett* 2004;363:257–261.
- Chen ZH, Hurh YJ, Na HK, *et al*. Resveratrol inhibits TCDD-induced expression of CYP1A1 and CYP1B1 and catechol estrogen-mediated oxidative DNA damage in cultured human mammary epithelial cells. *Carcinogenesis* 2004;25:2005–2013.
- Mikstacka R, Przybylska D, Rimando AM, *et al*. Inhibition of human recombinant cytochromes P450 CYP1A1 and CYP1B1 by trans-resveratrol methyl ethers. *Mol Nutr Food Res* 2007;51:517–524.
- Jefcoate CR, Liehr JG, Santen RJ, *et al*. Tissue-specific synthesis and oxidative metabolism of estrogens. *J Natl Cancer Inst Monogr* 2000; 95–112.
- Shimada T, Watanabe J, Kawajiri K, *et al*. Catalytic properties of polymorphic human cytochrome P450 1B1 variants. *Carcinogenesis* 1999;20:1607–1613.
- Shimada T, Gillam EM, Sutter TR, *et al*. Oxidation of xenobiotics by recombinant human cytochrome P450 1B1. *Drug Metab Dispos* 1997;25:617–622.
- McFadyen MC, Cruickshank ME, Miller ID, *et al*. Cytochrome P450 CYP1B1 over-expression in primary and metastatic ovarian cancer. *Br J Cancer* 2001;85:242–246.
- Saini S, Hirata H, Majid S, *et al*. Functional significance of cytochrome P450 1B1 in endometrial carcinogenesis. *Cancer Res* 2009;69:7038–7045.
- Su JM, Lin P, Wang CK, *et al*. Overexpression of cytochrome P450 1B1 in advanced non-small cell lung cancer: a potential therapeutic target. *Anticancer Res* 2009;29:509–515.
- Rochat B, Morsman JM, Murray GI, *et al*. Human CYP1B1 and anticancer agent metabolism: mechanism for tumor-specific drug inactivation? *J Pharmacol Exp Ther* 2001;296:537–541.
- McFadyen MC, McLeod HL, Jackson FC, *et al*. Cytochrome P450 CYP1B1 protein expression: a novel mechanism of anticancer drug resistance. *Biochem Pharmacol* 2001;62:207–212.
- Bournique B, Lemarie A. Docetaxel (Taxotere) is not metabolized by recombinant human CYP1B1 *in vitro*, but acts as an effector of this isozyme. *Drug Metab Dispos* 2002;30:1149–1152.
- Knuth A, Gabbert H, Dippold W, *et al*. Biliary adenocarcinoma. Characterisation of three new human tumor cell lines. *J Hepatol* 1985;1:579–596.



36. Shimizu Y, Demetris AJ, Gollin SM, *et al*. Two new human cholangiocarcinoma cell lines and their cytogenetics and responses to growth factors, hormones, cytokines or immunologic effector cells. *Int J Cancer* 1992;52:252–260.
37. Miyagiwa M, Ichida T, Tokiwa T, *et al*. A new human cholangiocellular carcinoma cell line (HuCC-T1) producing carbohydrate antigen 19/9 in serum-free medium. *In Vitro Cell Dev Biol* 1989;25:503–510.
38. Storto PD, Saidman S L, Demetris AJ, *et al*. Chromosomal breakpoints in cholangiocarcinoma cell lines. *Genes Chromosomes Cancer* 1990;2:300–310.
39. Grubman SA, Perrone R D, Lee DW, *et al*. Regulation of intracellular pH by immortalized human intrahepatic biliary epithelial cell lines. *Am J Physiol* 1994;266(6 Part 1):G1060–G1070.
40. DeMorrow S, Glaser S, Francis H, *et al*. Opposing actions of endocannabinoids on cholangiocarcinoma growth: recruitment of fas and fas ligand to lipid rafts. *J Biol Chem* 2007;282:13098–13113.
41. Livak KJ, Schmittgen TD. Analysis of relative gene expression data using real-time quantitative PCR and the 2<sup>(-Delta Delta C(T))</sup> Method. *Methods* 2001;25:402–408.
42. DeMorrow S, Francis H, Gaudio E, *et al*. The endocannabinoid anandamide inhibits cholangiocarcinoma growth via activation of the non-canonical Wnt signaling pathway. *Am J Physiol Gastrointest Liver Physiol* 2008;295:G1150–G1158.
43. Fava G, Marucci L, Glaser S, *et al*. gamma-Aminobutyric acid inhibits cholangiocarcinoma growth by cyclic AMP-dependent regulation of the protein kinase A/extracellular signal-regulated kinase 1/2 pathway. *Cancer Res* 2005;65:11437–11446.
44. Coufal M, Invernizzi P, Gaudio E, *et al*. Increased local dopamine secretion has growth-promoting effects in cholangiocarcinoma. *Int J Cancer* 2009;126:2112–2122.
45. Kim YA, Kim GY, Park KY, *et al*. Resveratrol inhibits nitric oxide and prostaglandin E2 production by lipopolysaccharide-activated C6 microglia. *J Med Food* 2007;10:218–224.
46. Kim YA, Lim SY, Rhee SH, *et al*. Resveratrol inhibits inducible nitric oxide synthase and cyclooxygenase-2 expression in beta-amyloid-treated C6 glioma cells. *Int J Mol Med* 2006;17:1069–1075.
47. Awad AB, Burr AT, Fink CS. Effect of resveratrol and beta-sitosterol in combination on reactive oxygen species and prostaglandin release by PC-3 cells. *Prostaglandins Leukot Essent Fatty Acids* 2005;72:219–226.
48. Takada Y, Bhardwaj A, Potdar P, *et al*. Nonsteroidal anti-inflammatory agents differ in their ability to suppress NF-kappaB activation, inhibition of expression of cyclooxygenase-2 and cyclin D1, and abrogation of tumor cell proliferation. *Oncogene* 2004;23:9247–9258.
49. Quan F, Pan C, Ma Q, *et al*. Reversal effect of resveratrol on multidrug resistance in KBv200 cell line. *Biomed Pharmacother* 2008;62:622–629.
50. Kao CL, Huang PI, Tsai PH, *et al*. Resveratrol-induced apoptosis and increased radiosensitivity in CD133-positive cells derived from atypical teratoid/rhabdoid tumor. *Int J Radiat Oncol Biol Phys* 2009;74:219–228.
51. Taniai M, Grambihler A, Higuchi H, *et al*. Mcl-1 mediates tumor necrosis factor-related apoptosis-inducing ligand resistance in human cholangiocarcinoma cells. *Cancer Res* 2004;64:3517–3524.
52. Schniewind B, Christgen M, Kurdow R, *et al*. Resistance of pancreatic cancer to gemcitabine treatment is dependent on mitochondria-mediated apoptosis. *Int J Cancer* 2004;109:182–188.
53. Uppstad H, Ovrebo S, Haugen A, *et al*. Importance of CYP1A1 and CYP1B1 in bioactivation of benzo[a]pyrene in human lung cell lines. *Toxicol Lett* 2010;192:221–228.
54. Murray GI, Taylor MC, McFadyen MC, *et al*. Tumor-specific expression of cytochrome P450 CYP1B1. *Cancer Res* 1997;57:3026–3031.
55. Murray GI, Melvin WT, Greenlee WF, *et al*. Regulation, function, and tissue-specific expression of cytochrome P450 CYP1B1. *Annu Rev Pharmacol Toxicol* 2001;41:297–316.